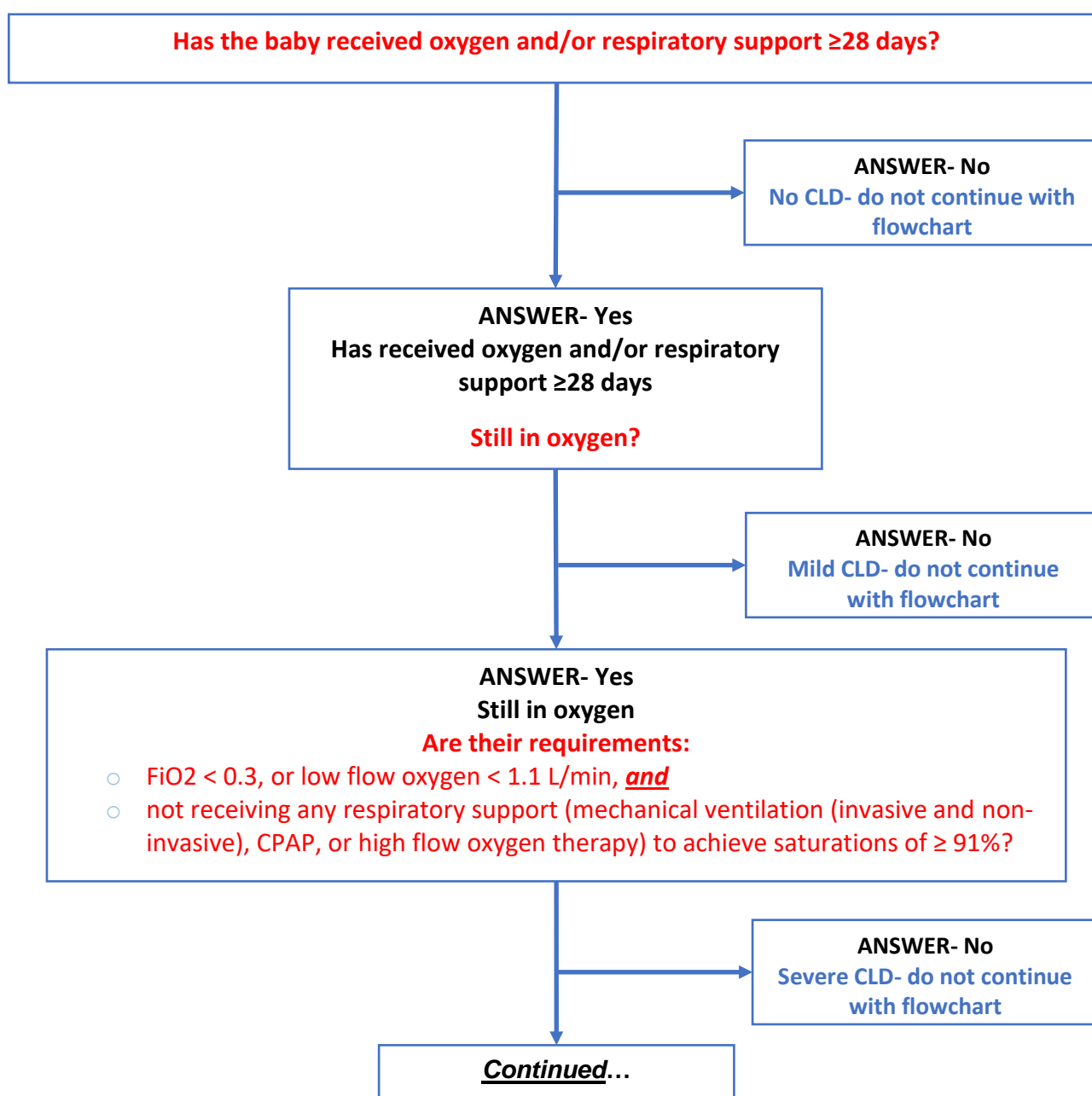


# Guidance Sheet 10: Oxygen Reduction Test

## General points

- Please complete the Primary Outcome assessment as close to 36 weeks post-menstrual age as possible ( $\pm 5$  days), or prior to discharge home if sooner.
- Only perform the oxygen reduction test if baby has received oxygen and/or respiratory support for  $\geq 28$  days cumulatively and the following:
  - The baby is not receiving mechanical ventilation (invasive and non-invasive), CPAP, or high flow oxygen therapy
  - $FiO_2 < 0.3$ , or low flow oxygen  $< 1.1$  L/min to maintain saturations of  $\geq 91\%$
  - In previous 24 hours, baby has not required respiratory support

## Procedure



# Guidance Sheet 10: Oxygen Reduction Test

